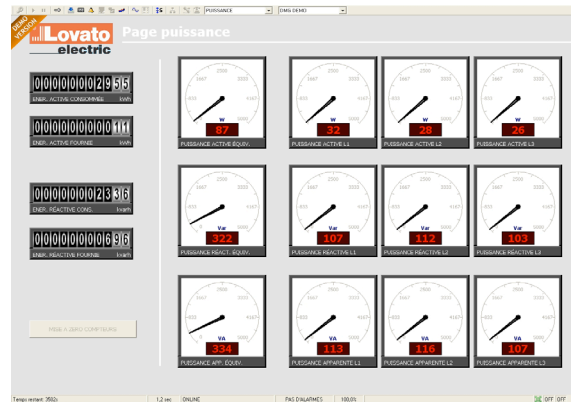
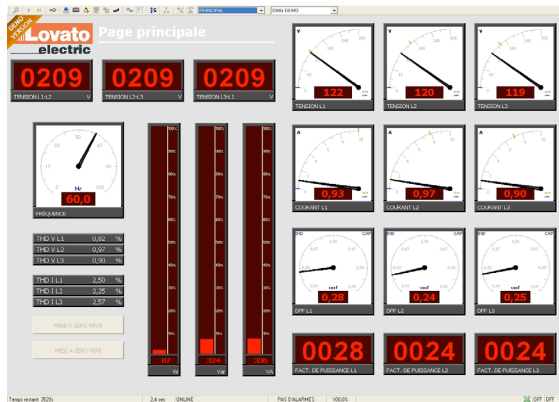




### DESCRIPTION

The CL-425 is a high-precision power analyzer with graphical display. The unit includes a digital multimeter that is configured to provide three phase measurements with harmonic analysis of basic current and voltage. The power analyzer is the best tool to required electrical measurement monitoring and storage.

The trainer comes with a dedicated software and a USB port. All the electrical components are brought out to 4mm separated terminals on the front panel. For ease of identification and use, the specifications and schematic diagrams are silk-screened on the reverse of the clear front panel. Requires a 120V 60Hz or 220V 50Hz circuit.



EXAMPLES OF SOFTWARE DISPLAY

**TECHNICAL SPECIFICATIONS**

FEATURES	DETAILS
Power supply :	120-220 VAC - 50-60 Hz
Measurement maximum values:	Three phase - 600 VAC - 30 A
Measurement types:	<ul style="list-style-type: none"> <li>▪ Voltage: line, phase and main</li> <li>▪ Current : phase (calculated neutral current)</li> <li>▪ Power: real, reactive, apparent and total</li> <li>▪ Cos <math>\phi</math> and phase angle: per phase and total</li> <li>▪ Frequency: for measured voltage</li> </ul>
Precision:	<ul style="list-style-type: none"> <li>▪ Voltage: <math>\pm 0.2\%</math> (50 to 830 V AC)</li> <li>▪ Current: <math>\pm 0.2\%</math> (0.1 to 1.1 in)</li> <li>▪ Power: <math>\pm 0.5\%</math> full scale</li> <li>▪ Power factor: <math>\pm 0.5\%</math></li> <li>▪ Frequency: 0.05 %</li> <li>▪ Real energy: Class 0.5S compliant with IEC/EN 62053-22</li> <li>▪ Reactive energy: Class 2 compliant with IEC/EN 62053-23</li> </ul>
Special functions:	<ul style="list-style-type: none"> <li>▪ Average values integration function</li> <li>▪ Power and current peak values (max. demand)</li> <li>▪ Voltage and current asymmetry</li> <li>▪ Voltage and current total harmonic distortion</li> <li>▪ Voltage and current harmonic distortion analysis up to 31st rank with bargraph display</li> <li>▪ Active, reactive, partial apparent and total energy meter with programmable tariff function</li> <li>▪ Min. and max. values storage</li> </ul>
Display type:	128 x 80 pixels graphs
Connector type:	USB port for PC communication
Protection type:	Fuse
Dimensions:	30 x 32 x 25 cm (12" x 12.56" x 10")
Weight:	5 kg (11 lb)