

**DESCRIPTION**

The Consulab CL-11 is a nurse call system trainer on a wall-mounted panel. It is built so that students can assemble, wire, and connect different circuits. The visual nurse call panel manages calls initiated at patient stations and staff duty stations on a central panel that provides visual and tone annunciation of call events. Edwards components are used for this trainer. The trainer comes with a complete reference manual.

The trainer consists of the following components:

- One (1) eleven-point annunciator (A)
- One (1) power supply (B)
- Two (2) pull cord stations (C)
- Two (2) corridor lamps (D)
- Two (2) patient stations (E)
- Two (2) bed call cords (F)

**A. ELEVEN-POINT ANNUNCIATOR**

The eleven-point annunciator provides visible/tone call status indication without presence indication. Configured on a single display panel as an array of LED lamps dedicated to each configured call point, the annunciator offers at-a-glance summaries of active call locations and areas where staff have registered their presence. Up to 11 individual call points may be monitored on this single annunciator panel. This also includes a buzzer for warning.

**General Specifications**

Dimensions HWD:	12.4" x 12.4" x 0.9" (31.5 x 31.5 x 2.29 cm)
Material:	Membrane Polycarbonate (Lexan)
Casing:	ABS flame retardant plastic (Noryl) chameleon grey
Installation:	Recessed or surface H-20 or SH-20 back box
Inscriptions:	Laser printed transparent film protected by polycarbonate membrane (Lexan)
Electrical Consumption:	24 V (20 W) max., 110V AC



© 2008  
Consulab Éducattech, Inc.

## B. POWER SUPPLY

The power supply consists of a pre-wired 24V DC power unit that plugs into 110V AC power outlet. It provides current for all connected devices.

### General Specifications

Housing: Black plastic box  
 Model no.: WRI 4214-D5  
 Output voltage: +24V DC / 1.75 A output  
 Power: 42 W

### Electrical Specifications

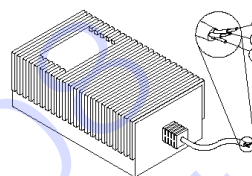
Input voltage: 90-265V AC, 47-63 Hz via IEC 320 type connector, power cord included  
 Input protection: Internal input line fuse  
 Load regulation: 5% for + 40% load variation (60% nominal)  
 Ripple & noise: +1% PK-PK max  
 Overload Protection: All outputs protected against overload and short circuit. Automatic recovery upon removal of overload conditions.  
 Overvoltage Protection: Provided on main output only : set at 115-135%  
 Efficiency: Typical 78% at full load

### Mechanical characteristics

Operating Temperature: 0 °C to +40 °C  
 Size: 6.3 x 3.82 x 2.66 in.  
 Output cable: 6 feet

### Certification

UL 1012, CSA Certified to 22.2 No. 220, TUV Licensed, IEC 950, CE Meets FCC / VDE Classe B



(1) White wire : GND  
 (2) Red wire : +24V DC  
 (3) Bare copper : EARTH GROUND

## C. PULL CORD STATIONS

The pull cord stations initiate normal or emergency calls in toilettes. They include an urgent call red LED and 5-foot pull cord each.

### General Specifications

Electrical consumption: Idle 0.00 mA / 24 V Max. 16.00 mA / 24V  
 Contact ratings: Max. 200 mA @ 24V DC  
 Dimensions HWD: 5.10" x 3.07" x 1.00" (12.95 x 7.79 x 2.54 cm)  
 Material: PC board Flame retardant FR4



## D. CORRIDOR LAMPS

Corridor lamps function much the same way as individual lamps on an annunciator panel. Typically installed above doorways adjacent to the call point location, these lamps provide local visual confirmation of call status, including call priority. There is no audible component to corridor lamp annunciation.

### General Specifications

Electrical consumption: LC01R-C 60 mA/ 24 V max.  
 LC02RG-C 120 mA/ 24 V  
 LCL01R-A 60 mA/ 24 V  
 LCL02RG-A 75 mA/ 24 V  
 Dimensions HWD: 5.2" x 4.56" x 3.85" (13.21 x 11.58 x 9.78 cm)  
 Front plate: White flame retardant ABS plastic  
 Connectors: 3 wire nuts or PVC sleeves



Installation Standard: 2 gang electrical back boxes

### E. PATIENT STATIONS

The patient stations transmit calls to the master station – as normal when pressing the call cord button or emergency when pressing the call cord button while nurse presence is activated. Visual indicator validates call (normal – emergency – presence). Latching contact for presence/cancel button. Momentary contact for cancel button. Call cord receptacle accepts all cords with a ¼ inch jack. Easy maintenance stainless steel front plate.



#### General Specifications

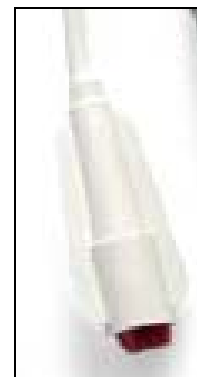
Consumption: Idle 0.00 mA / 24V Max 8.00 mA / 24V  
 Dimensions HWD: 2.75" x 4.5" x 1.5" (6 x 11,4 x 3,8 cm)

### F. BED CALL CORDS

The bed call cords are sturdy, resilient momentary contact devices used to initiate calls from patient stations. The cords include a standard push button and are available in lengths of 8 to 12 feet (2.5 to 3.6 m), and plug into the patient station with a ¼ inch molded ABS plastic connector.

#### General Specifications

Switch	
Power:	3 A, 125 VAC; 2.5 VDC at 1A
Resistance:	20 mΩ or less
Dielectric resistance:	1000 Vac, 50/60 Hz for 1 min.
Type:	momentary, SPST, N.O.
Switch Enclosure:	Flame retardant ABS
Terminals:	Silver-plated copper
Cable Insulation:	PVC
Color:	White, beige or grey
Metal sheet clip:	Fixed (cannot be removed)
Sterilization:	Ethylene oxide acceptable



**The Nurse Call Trainer** components are made by Edwards, a Canadian designer and manufacturer of nurse call products for hospitals, nursing homes, and senior's residences, as well as paging and intercom systems for schools, industrial and institutional facilities.